

*Instruction Manual*



**90-2271**

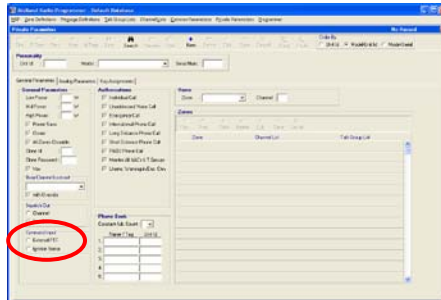
**Ignition Sense Kit**

**For STM Series P25 Mobile Transceivers**

*[www.midlandradio.com](http://www.midlandradio.com)*


The 90-2271 Ignition Sense Kit may be installed on STM series P25 mobile radios so they automatically turn-off when the vehicle's ignition is turned off. The operator does not have to remember to turn the radio off when exiting the vehicle, and the radio will not drain the vehicle battery if the operator forgets to turn it off.

- ! **Beginning with version MDV 1.00.2043 radio firmware the “Command Input” may be programmed as a PTT input or an ignition sense input. On the MRP\_P25 Private Parameters|General Parameters screen (version 1.04.007 and above), select “Ignition Sense” as the “Command Input” for any mobile radios that will be using ignition sense.**



The key to installation is to locate the appropriate point at the vehicle's fuse block for connection of the ignition sense wire. Use a voltmeter to determine if the connection point is on/off when the ignition switch is in the appropriate position. If it is desired to operate the radio while the engine is off, make the connection to a point that is switched to a +12V fused connection when the ignition switch is in the “accessory” position. Otherwise, make the connection to a point that is switched to fused +12V when the ignition switch is in the “run” position. The connection point should be less than 1V when the ignition switch is in the “off” position.


Once the appropriate connection point is located, route the wire from the back of the radio to the fuse block and apply a suitable termination to the ignition sense wire to make the connection to the fuse block.


-  *There are numerous taps and connectors available to make the connection to the fuse block easier and more secure. **A Fused connection is highly recommended.***

To connect the ignition sense wire to the radio, align the arrow on the ignition sense connector with the arrow (triangle) on the radio option connector and push the connector until it locks in place. To unplug the connector, pull back on the collar, in a manner similar to an air hose quick connect.

Once all radio and power connections are secure, check the operation as follows:

1. Turn the ignition switch on.
2. Press and release the radio on/off switch to turn the radio on. The radio should perform a power-on self-test and turn on.
3. Turn the ignition switch off. After a few seconds the radio should turn off.
4. Turn the ignition switch back on. The radio should turn on.

-  *The radio's on/off switch may always be used to turn the radio on or off and override the ignition sense logic. The radio will only turn on with the ignition sense logic, if it turned off by the ignition sense. If you use the on/off switch to turn the radio off, you must also turn the radio back on with the on/off switch.*

-  *After several days in the ignition off state, the radio will turn off completely to conserve the vehicle battery. In this case, press and release the radio's on/off switch to turn the radio back on.*

- ! If the radio does not turn on when the ignition is turned on, press and release the radio's on/off switch to turn it on. See the above notes for possible causes.**



Revised June 2012